

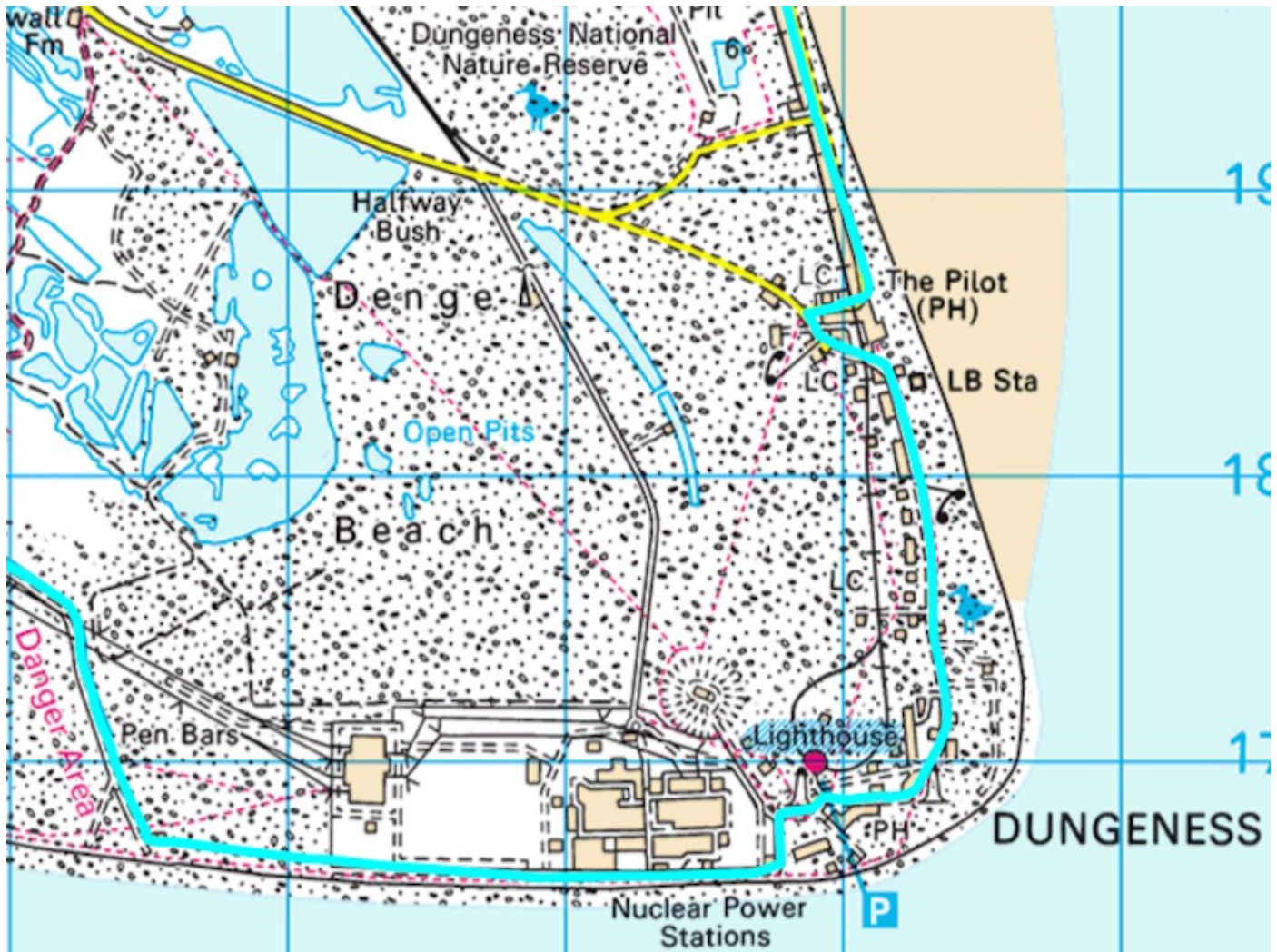
England Coast Path Information Sheet for Romney Marsh

4. Lydd-on-Sea and Dungeness



The England Coast Path is a new National Trail all around England's coast. It is opening in sections and will be complete in 2020. The Romney Marsh section opened in July 2016 and can be accessed anywhere along its route.

This information sheet, the fourth in a series of five (*see below*), provides a map of the section that mainly follows the coastline and provides views of Lydd-on-Sea and Dungeness, including the two lighthouses, the RH&DR and the power stations.



Access, Restrictions and Exclusions

You can use the QR code on the right to find information about access, restrictions and exclusions for any part of the path.



England Coast Path Information Sheets for Romney Marsh

1. Royal Military Canal and Dymchurch Redoubt
2. Dymchurch and St Mary's Bay
3. Littlestone and Greatstone
4. Lydd-on-Sea and Dungeness
5. Lydd

For more information and to view the other maps, please visit theromneymarsh.net/coastpath



Produced by theromneymarsh.net
July 2016